



# Technical Packet

---

Erie Insurance Arena

809 French Street

Erie, PA 16501

814-453-7117

814-455-9931 (fax)

[Erievents.com](http://Erievents.com)

## Table of Contents

<u>Page No.</u>	<u>Contents</u>
<i>3</i>	Staff Directory
<i>4</i>	Directions
<i>5</i>	Maps locating Erie Insurance Arena
<i>6</i>	Lighting, Electrical, Rigging, Audio
<i>7</i>	Staging, Loading, Floor Loading, Scoreboard, Labor
<i>8</i>	Seating Capacities
<i>9</i>	Site Map
<i>10</i>	Event Level Map
<i>11</i>	Concourse Level Map
<i>12</i>	Suite Level Map
<i>13 - 16</i>	Room Layout
<i>17</i>	Rigging Plans with Capacities
<i>18</i>	Cross Sections
<i>19</i>	180-240-270 Degree Capacities

## Staff Directory

809 French Street

Erie, PA 16501

Administrative Offices: 814-453-7117

Box Office: 814-452-4857

Fax: 814-455-9931

[www.erieevents.com](http://www.erieevents.com)

	<u>Position</u>	<u>Direct</u>	<u>Email</u>
John "Casey" Wells	Executive Director	814-480-6012	<a href="mailto:casey@erieevents.com">casey@erieevents.com</a>
Ray Williams	Director of Sports Facilities	814-480-6013	<a href="mailto:rwilliams@erieevents.com">rwilliams@erieevents.com</a>
Ed Snyder	Asst. Dir. of Sports Facilities	814-480-6049	<a href="mailto:esnyder@erieevents.com">esnyder@erieevents.com</a>
Brigid O'Brien	Exec. Asst./Premium Services Cord.	814-480-6035	<a href="mailto:brigid@erieevents.com">brigid@erieevents.com</a>
Ann Noble	Office/Box Office Manager	814-480-6018	<a href="mailto:ann@erieevents.com">ann@erieevents.com</a>
Michael Bane	Technical Services Manager (IT)	814-480-6080	<a href="mailto:mbane@erieevents.com">mbane@erieevents.com</a>
Rick Balsiger	Building Superintendent	814-480-6029	<a href="mailto:rick@erieevents.com">rick@erieevents.com</a>
Dawn Betza	Marketing Coordinator	814-480-6010	<a href="mailto:dawn@erieevents.com">dawn@erieevents.com</a>
Beth Wilkinson	Food & Beverage Coordinator	814-480-6034	<a href="mailto:bwilkinson@erieevents.com">bwilkinson@erieevents.com</a>
Sonia Ferrante	Merchandise Coordinator	814-480-6039	<a href="mailto:sonia@erieevents.com">sonia@erieevents.com</a>
Brandon Boyd	Client Relations & Social Media Cord.	814-480-6051	<a href="mailto:bboyd@erieevents.com">bboyd@erieevents.com</a>
Neal Wurst	Chief Mechanical Engineer	814-480-6038	<a href="mailto:nwurst@erieevents.com">nwurst@erieevents.com</a>
Jim Rogers	House Security	814-881-3233	<a href="mailto:ajhjk418@roadrunner.com">ajhjk418@roadrunner.com</a>
Tom Catalde	I.A.T.S.E. Business Agent	814-528-1757	<a href="mailto:tomcatalde1@gmail.com">tomcatalde1@gmail.com</a>

Directions to Erie Insurance Arena

**PLEASE USE 823 HOLLAND ST, ERIE, PA 16501  
FOR GPS/COMPUTER DIRECTIONS TO REAR OF BUILDING**

**FROM THE EAST: BUFFALO, NY via I-90**

Take I-90 west toward Erie	
Take exit 32 from I-90 W toward for PA-290/PA-430 toward Wesleyville	0.2 mi.
Turn right onto PA-290 W/PA-430 W	5.3 mi.
Continue onto Bayfront Parkway	1.7 mi.
Turn left onto Holland Street	0.6 mi.

**FROM THE WEST: CLEVELAND, OH via I-90**

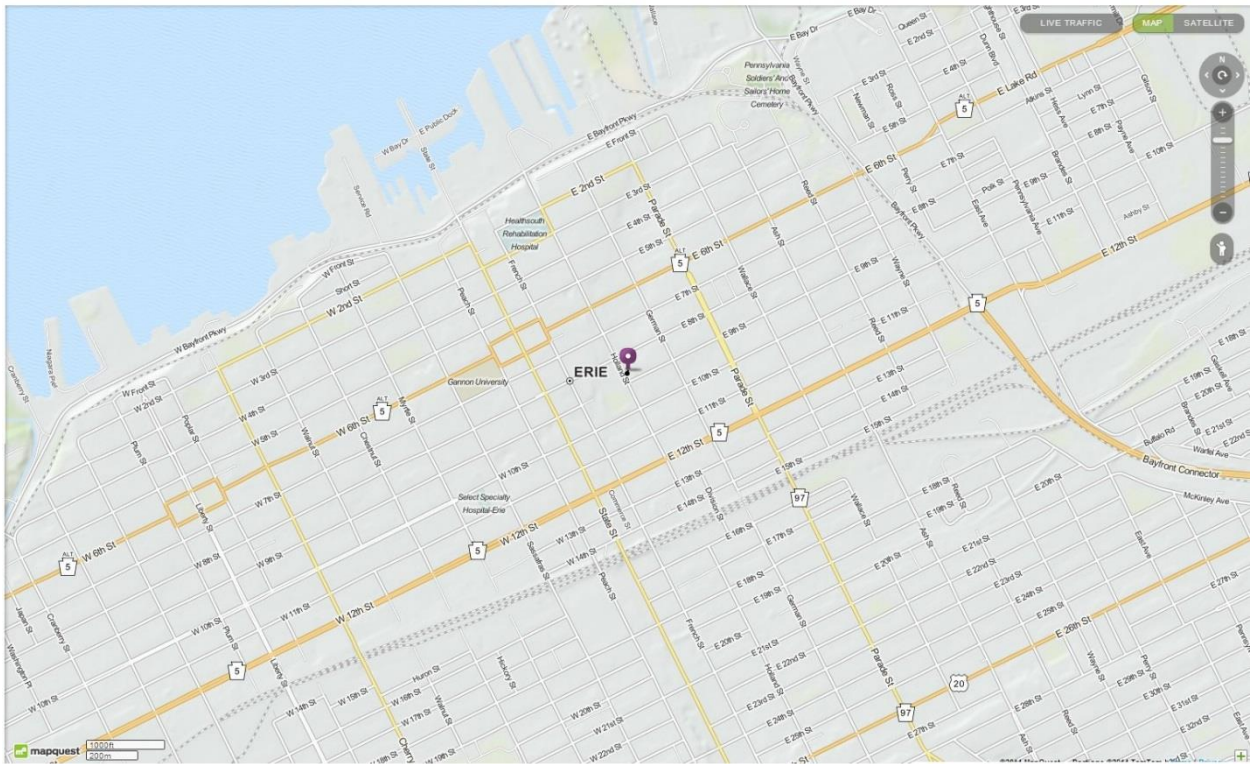
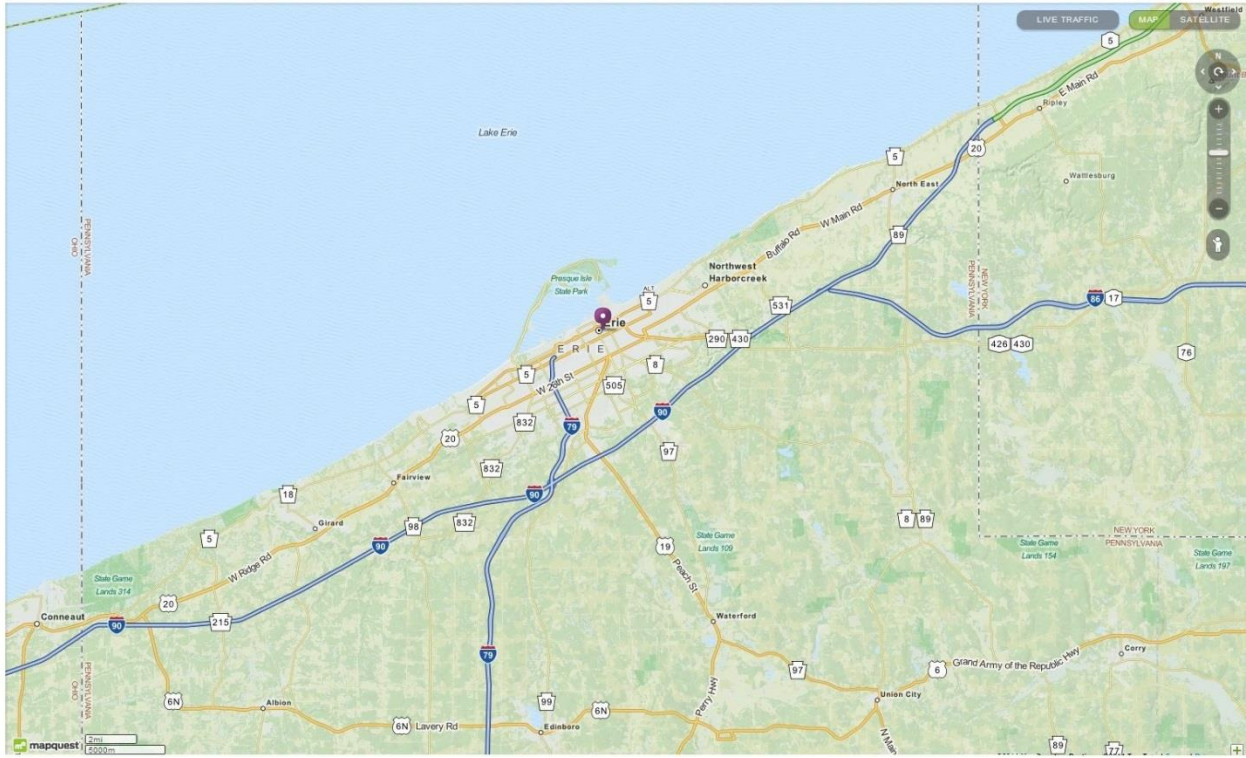
Take I-90 east toward Erie	
Take exit 22B from I-90 E for I-79 N	0.2 mi.
Take I-79 N toward Erie	6.5 mi.
Continue onto Bayfront Parkway	2.7 mi.
Turn right onto Holland Street	0.6 mi.

**FROM THE SOUTH: PITTSBURGH, PA via I-79**

Take I-79 north toward Erie	
Continue onto Bayfront Parkway	2.7 mi.
Turn right onto Holland Street	0.6 mi.



# MAPS LOCATING ERIE INSURANCE ARENA



## LIGHTING

Sport Lighting: (52) Musco 1000W Metal Halide, shuttered

House Lighting: (36) 500W quartz instant on/off, full or half house, non-dimmable

Aisle Lighting: (32) Source Four 500W, shuttered to highlight aisles and vom entrances, non-dimmable

Spotlights: (6) Lycian 2K

Illuminated advertising fascia boards (static) above Sections 101-110 & 112-122, above bowl entries:

(12) 6' x 22" instant on/off backlit LED panels

(2) 9' x 22" instant on/off backlit LED panels

(2) 4' x 22" instant on/off backlit LED panels

(1) Daktronics LED video display fascia advertising ribbon, above Section 111, above bowl entries, programmable

Backstage & Common areas: overhead fluorescent

## ELECTRICAL

### **ONLY 1600 AMPS CAN BE USED AT ONCE REGARDLESS OF CONFIGURATION**

(1) Show power distribution location SR; approximately 25' to USC backstage;

Available Connections:

(2) 600 amp 3Ø 5-wire with female Cam-lok connectors

(2) 400 amp 3Ø 5-wire with female Cam-lok connectors

(2) 200 amp 3Ø 5-wire with female Cam-lok connectors

(2) 100 amp 3Ø 5-wire with female Cam-lok connectors

Erie Insurance Arena has no tails, reverse negative & neutral

Outdoor Shore Power Locations

(3) 200 amp 3Ø 5-wire with female Cam-lok connectors

See site plan for exact locations, all at exterior loading dock

## RIGGING

Rigging grid located on east end of arena, see page 17 for loading capacity. Fall arrest system in place above entire ice rink surface. All rigging to high steel requires 2 up riggers per rope.

45' to bottom of roof truss

70' to peak of roof truss

## AUDIO

House system: (42) fixed speakers, no individually controlled speakers

Microphones:

(4) Audio Technica wireless handheld

(12) Double Muff headsets with mic

(2) Sennheiser wireless handheld,

(6) ClearCom belt packs

(1) Audio Technica wireless lavalier

## STAGING

- (40) StageRight ME-500 frames, adjustable: 48" minimum - 78" maximum height
- (96) StageRight 4' x 8' decks, black TechStage one side, gray carpet one side, 250 PSF capacity
- (9) StageRight 8' long railings, 42" H
- (7) StageRight 8' long railings, 32" H
- (2) StageRight 4' long railings, 42" H
- (3) StageRight 7 tread-stair units variable height 4'-6' height, (2) handrails per unit
- (1) 60' long Sico ADA ramp, 36" wide, maximum 6' height, with railings
- 90' Black stage skirting, 48" – 78" high
- 80' StageRight "blow through" barricade

## LOADING

70' level and mostly straight push from (3) docks to backstage USC.

All trucks need ramps or forklifts for unloading

- (2) Clark propane 14' lift 5' forks, extensions available; 5,000 lb. capacity & 4,000 lb. capacity

## FLOOR LOADING

Refrigerated rink floor slab, loading capacity of 5,000 psi.

## SCOREBOARD

Center hung; (4) Daktronics 6mm LED video display, nests above steel, basketball, hockey and sport programmable;  
East wall video display, (4) Daktronics 10 mm LED video display, (1) Daktronics standard scoreboard  
West wall video display, (2) Daktronics 10 mm LED video display, (1) Daktronics standard scoreboard

## LABOR

Operations staff is in-house, non-union. Responsibilities include, but are not limited to: stage and riser construction, conversions, seat placement, handrails, ice deck, dasher boards, forklift (when not specifically needed for, by or with IA union call), Zamboni operations & ice maintenance, building & grounds maintenance.

Stagehand staff is IATSE Local #113, Tom Catalde, Business Agent; (814) 528-1757. Stagehand call is 4 hour in & 2 hour out minimum. Straight time between 8 AM and 12 AM midnight; OT thereafter and after 8 hours straight time, all holidays are OT except New Year's Eve at double time

Stagehand responsibilities include, but are not limited to: truck loading/unloading, concert & special event technical install, dismantle & operations as pre-determined by promoter, tour, building administration & union officials; spotlight operators; forklift operations.

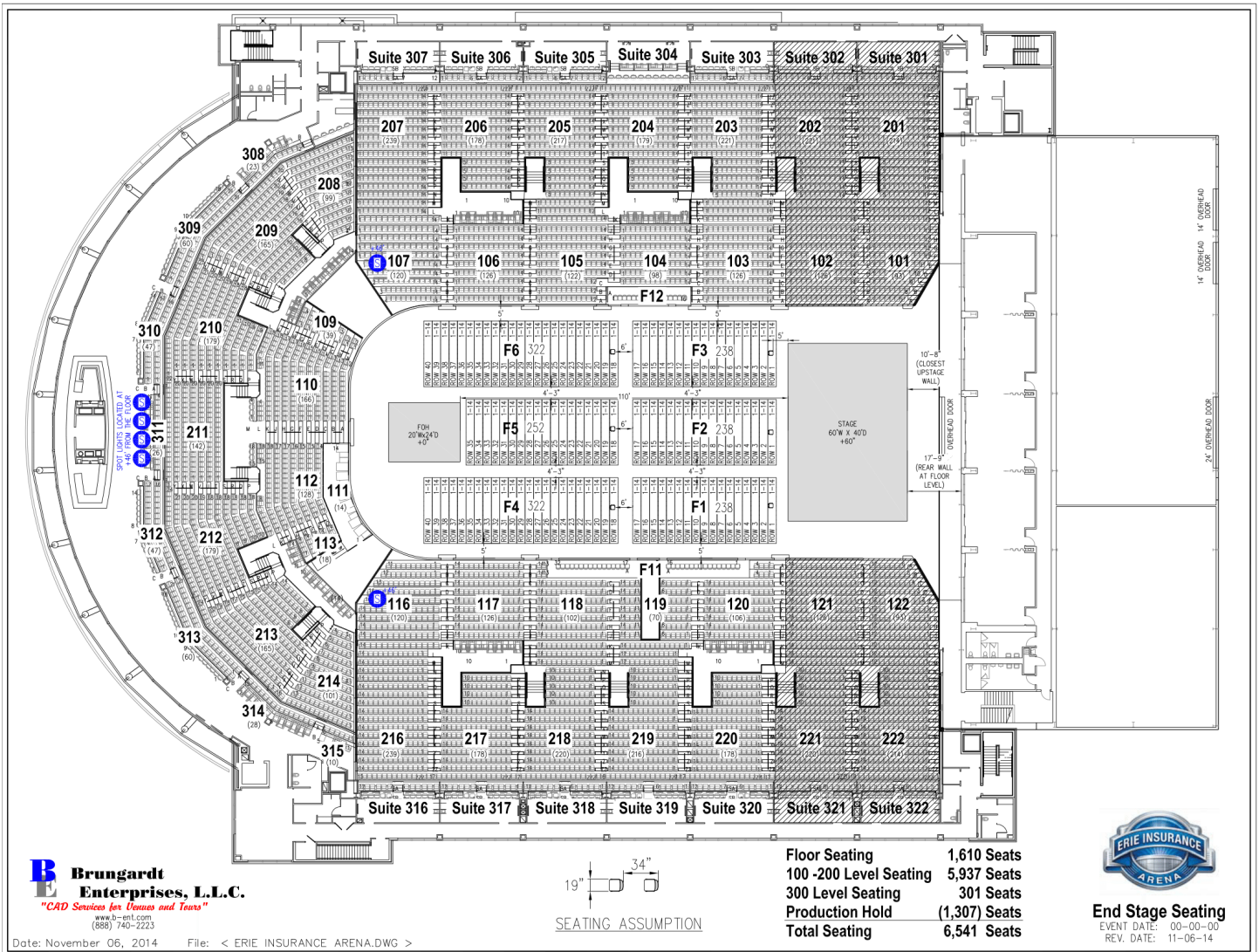
Rigging staff is supplied in-house, supplemental riggers available, rigging call is 2 hour in and 2 hour out minimum



# SEATING CAPACITIES

- General Admission Floor: 2200
- Reserved Floor: 1554 (FOH mix at 100')  
1610 (FOH mix at 110')
- Arena bowl seating:
  - Sec. 101/201 - 107/207 2296
  - Sec. 208 – 214 (including 109-113) 1395
  - Sec. 116/216 – 122/222 2246
  - Sec. 308 - 315 301

NOTE: THESE NUMBERS DO NOT INCLUDE ANY PRODUCTION KILLS OR HOLDS



**B Brungardt Enterprises, L.L.C.**  
*"CAD Services for Venues and Tours"*  
 www.b-e.nl.com  
 (888) 740-2223

Date: November 06, 2014 File: < ERIE INSURANCE ARENA.DWG >

SEATING ASSUMPTION

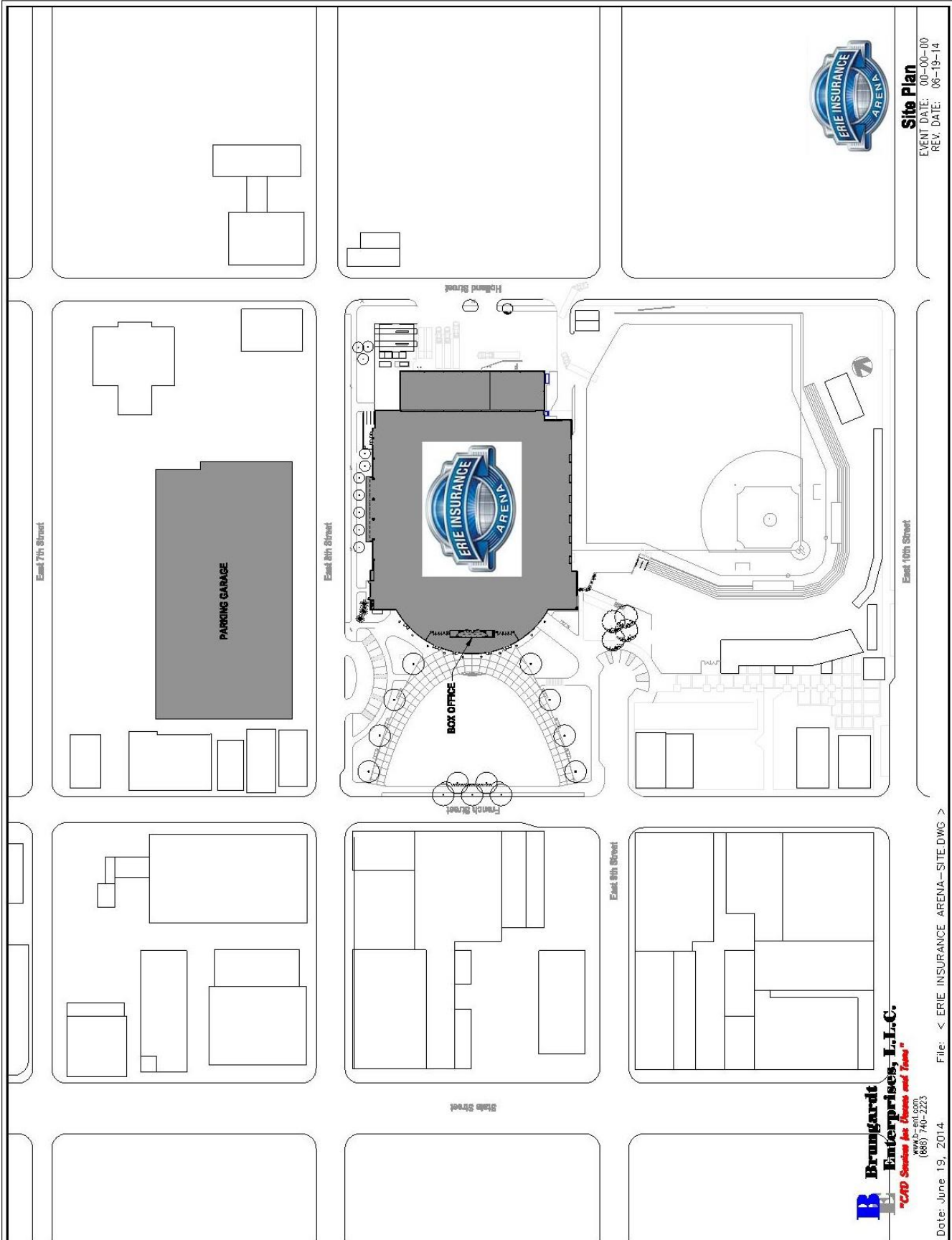
Floor Seating	1,610 Seats
100 -200 Level Seating	5,937 Seats
300 Level Seating	301 Seats
Production Hold	(1,307) Seats
<b>Total Seating</b>	<b>6,541 Seats</b>



**End Stage Seating**  
 EVENT DATE: 00-00-00  
 REV. DATE: 11-06-14



# Erie Insurance Arena Site Map



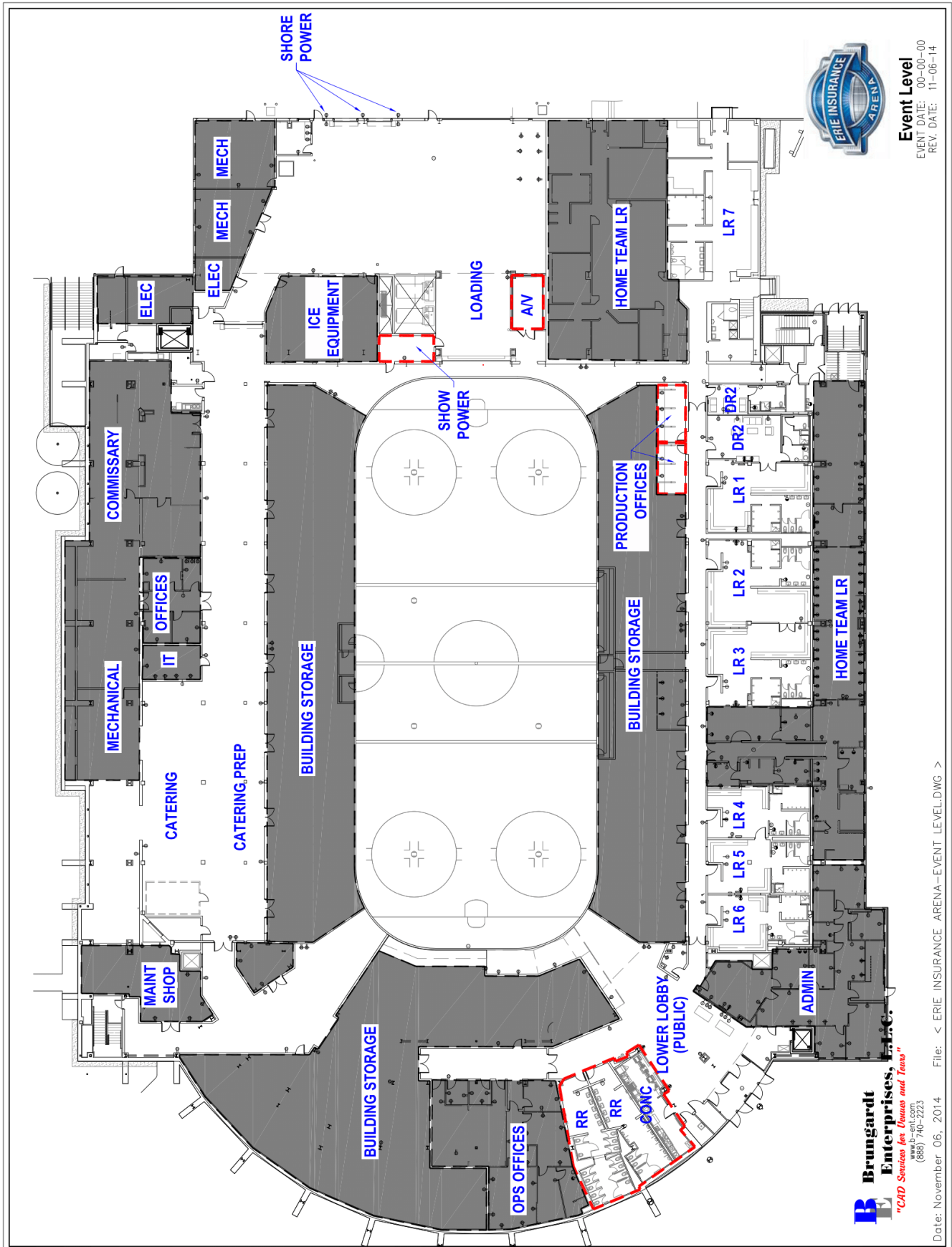
## Site Plan

EVENT DATE: 00-00-00  
REV. DATE: 06-19-14



Date: June 19, 2014 File: < ERIE\_INSURANCE\_ARENA-SITE.DWG >

# Erie Insurance Arena Event Level Map

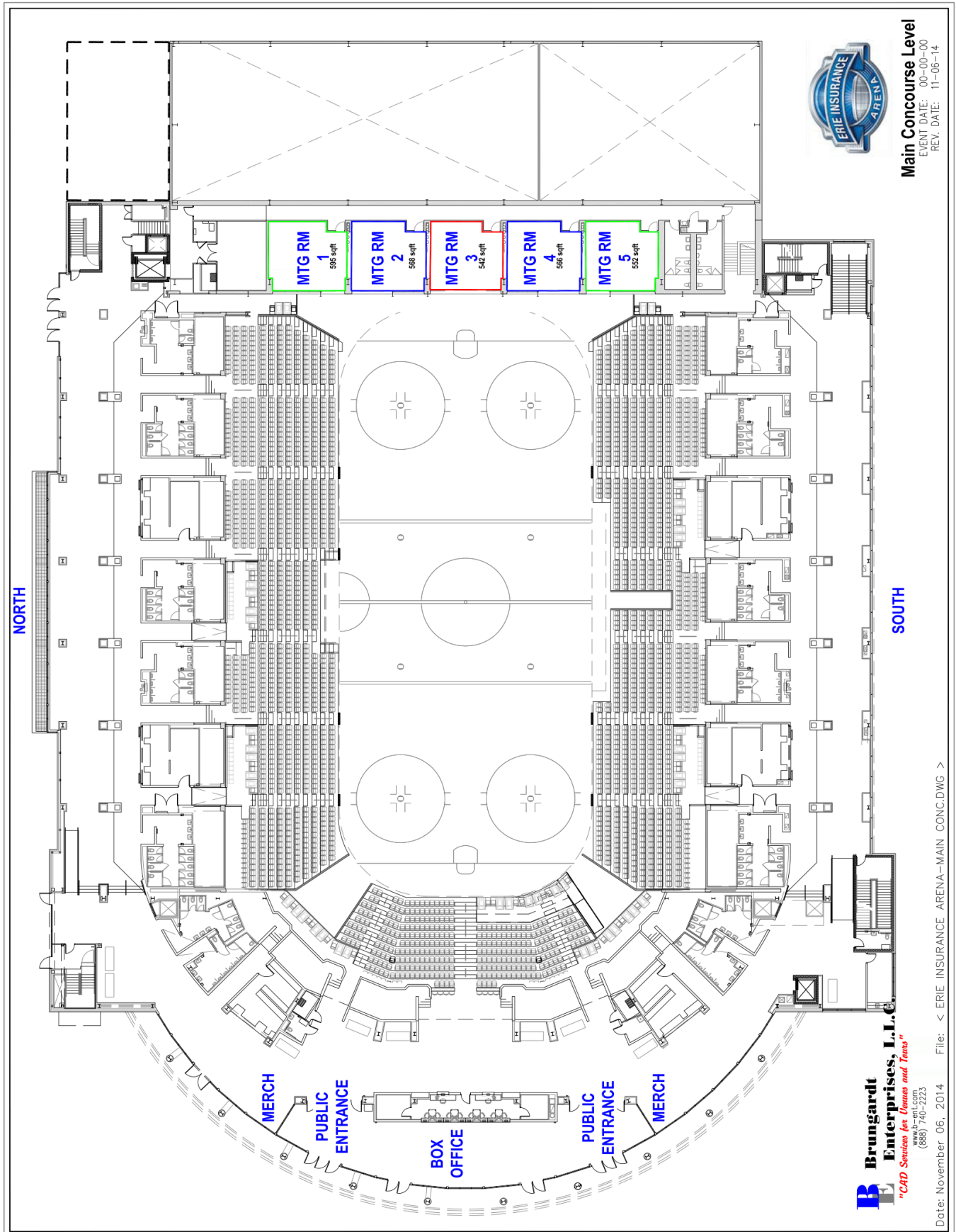


**Event Level**  
 EVENT DATE: 00-00-00  
 REV. DATE: 11-06-14

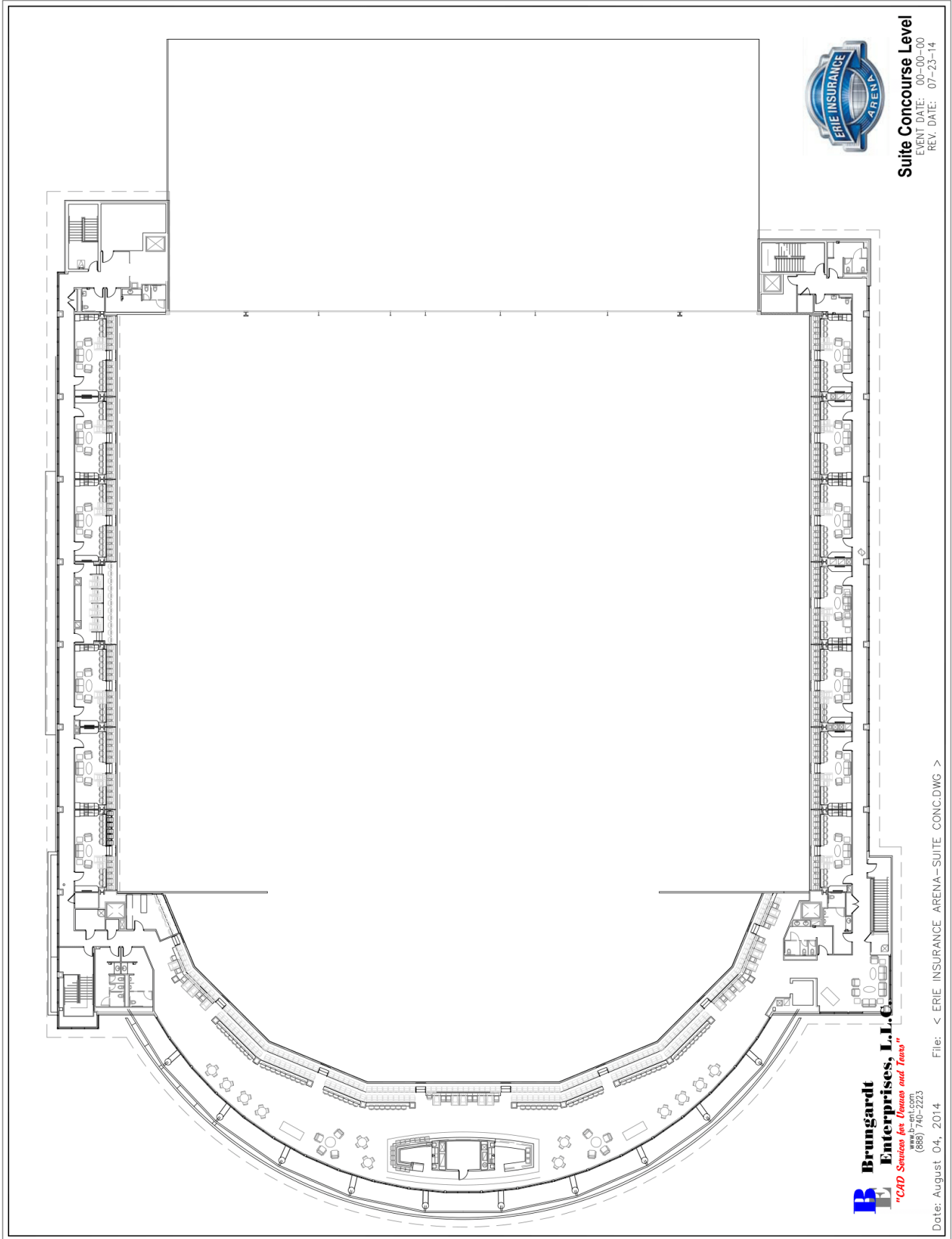
**Brungardt Enterprises, Inc.**  
*"CAD Services for Teams and Teams"*  
 www.b-e-i.com  
 (888) 740-2223

Date: November 06, 2014 File: < ERIE INSURANCE ARENA-EVENT LEVEL.DWG >

# Erie Insurance Arena Concourse Level Map



# Erie Insurance Arena Suite Level Map



**Suite Concourse Level**  
EVENT DATE: 00-00-00  
REV. DATE: 07-23-14

**B** Brungardt  
Enterprises, L.L.C.  
"CAD Services for Owners and Users"  
www.b-ent.com  
(888) 740-2223

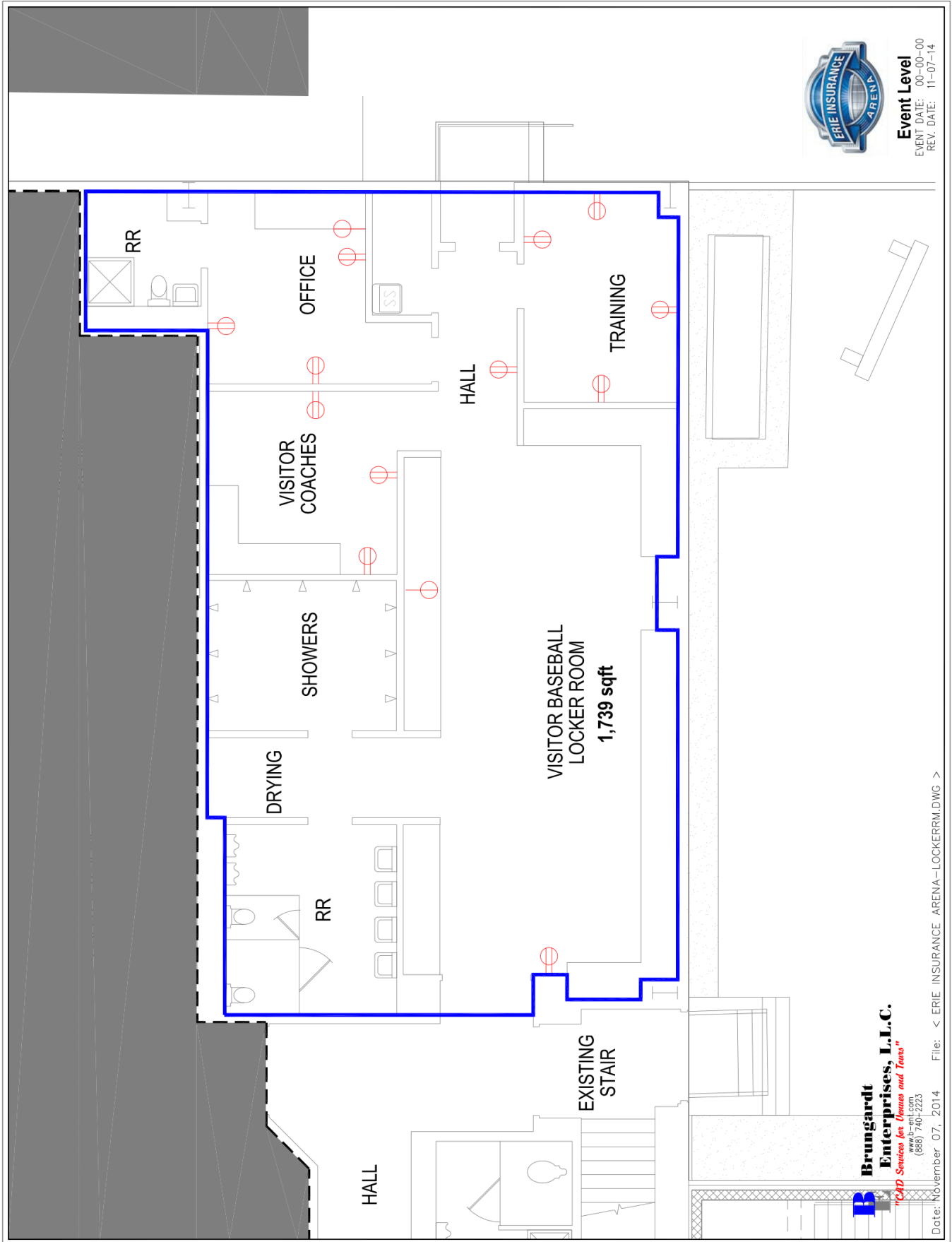
Date: August 04, 2014 File: < ERIE INSURANCE ARENA-SUITE\_CONC.DWG >

# Erie Insurance Arena Locker Room Layout





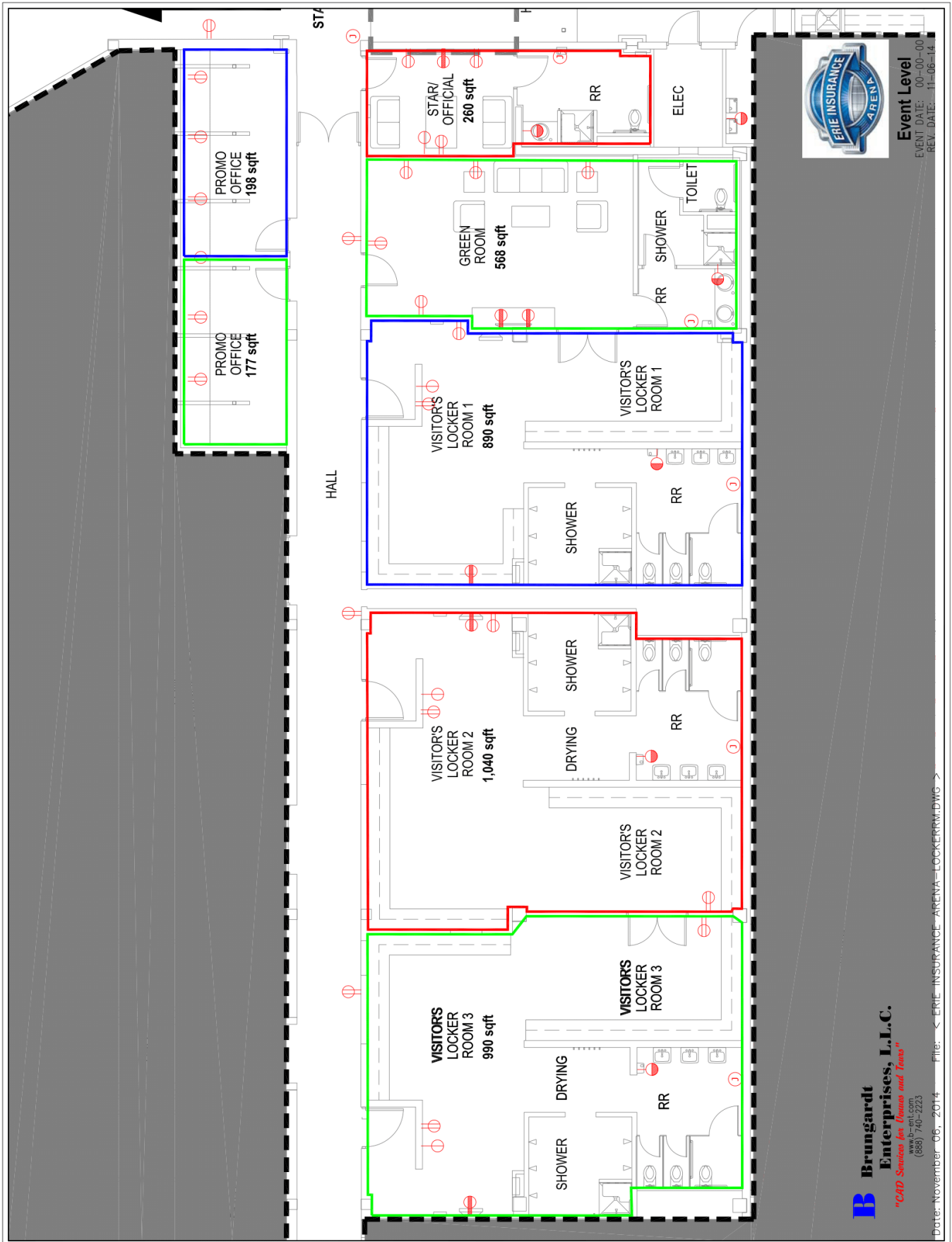
# Erie Insurance Arena Locker Room Layout



**Brungardt Enterprises, L.L.C.**  
www.br-e.com  
(888) 740-2223  
"CAD Services for Owners and Tenants"

Date: November 07, 2014 File: < ERIE INSURANCE ARENA-LOCKERM.DWG >

# Erie Insurance Arena Locker Room Layout

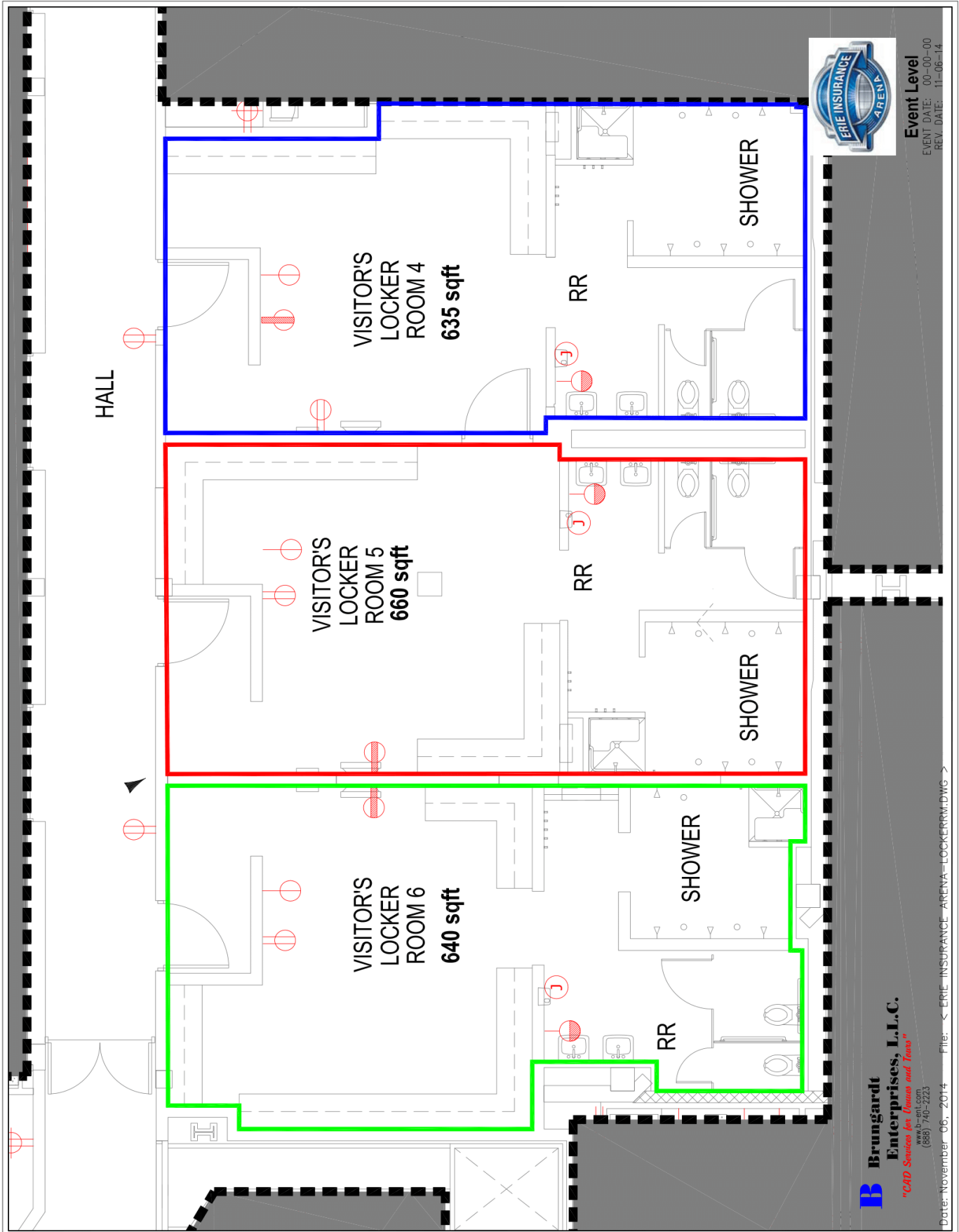


**Event Level**  
 EVENT DATE: 00-00-00  
 REV DATE: 11-06-14

**B Brungardt Enterprises, L.L.C.**  
*"CAD Services for Events and Tents"*  
 www.b-e-ent.com  
 (888) 740-2223

Date: November 06, 2014 File: < ERIE\_INSURANCE\_ARENA\_LOCKER.RVDWG >

# Erie Insurance Arena Locker Room Layout

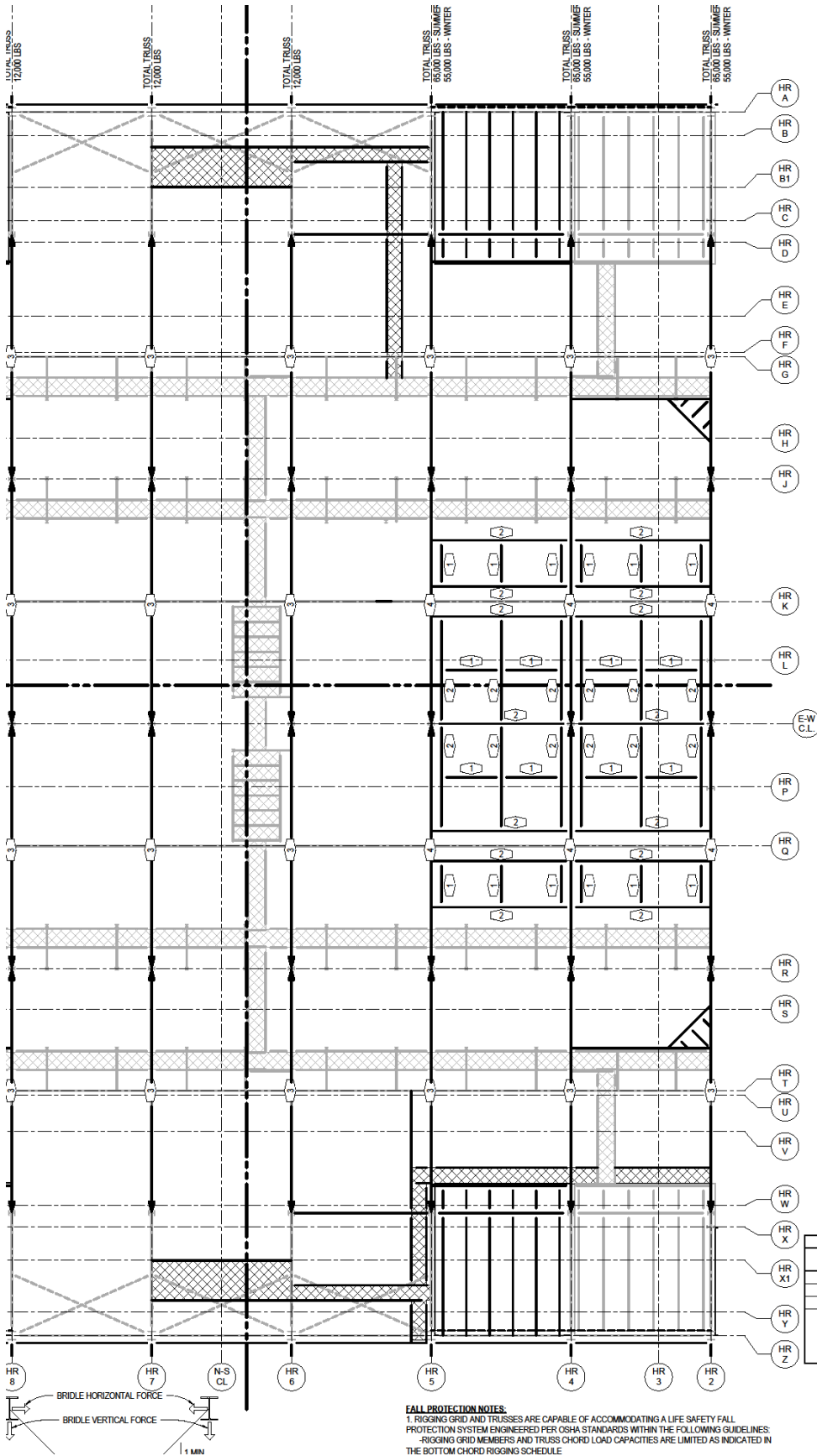


**Event Level**  
EVENT DATE: 00-00-00  
REV. DATE: 11-06-14

**Brungardt Enterprises, L.L.C.**  
"CAD Services for Teams and Teams"  
(888) 740-2223

Date: November-06, 2014 File: < ERIE INSURANCE ARENA-LOCKERRM.DWG >

# Erie Insurance Arena Rigging Plan with Capacities

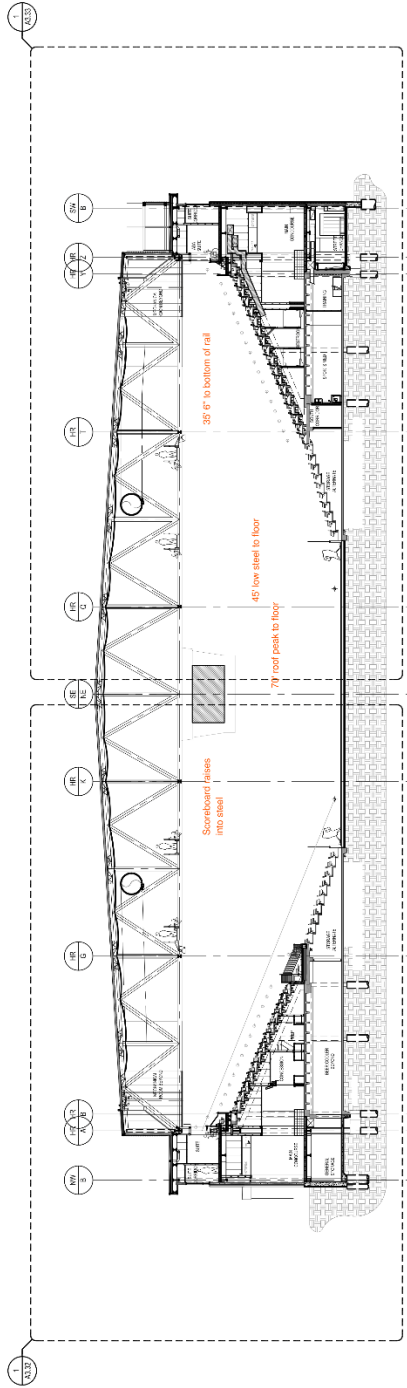


**LOADING CAPACITY NOTES:**  
 1. MAXIMUM DEAD HUNG AND BRIDLED RIGGING LOADS INDICATED BELOW ARE NOT INTENDED TO OCCUR CONCURRENTLY.  
 2. TOTAL LOAD CAPACITIES ARE NOTED. TOTAL LOAD IS THE SUMMATION OF ALL LOADS FROM DIRECT LOADING AND INTERSECTING MEMBERS.  
 3. SEE MAXIMUM TOTAL TRUSS RIGGING LOADS AT TOP OF THIS SHEET. SUMMATION OF VERTICAL RIGGING LOADS TO EACH TRUSS SHALL NOT EXCEED TOTAL LOAD INDICATED.

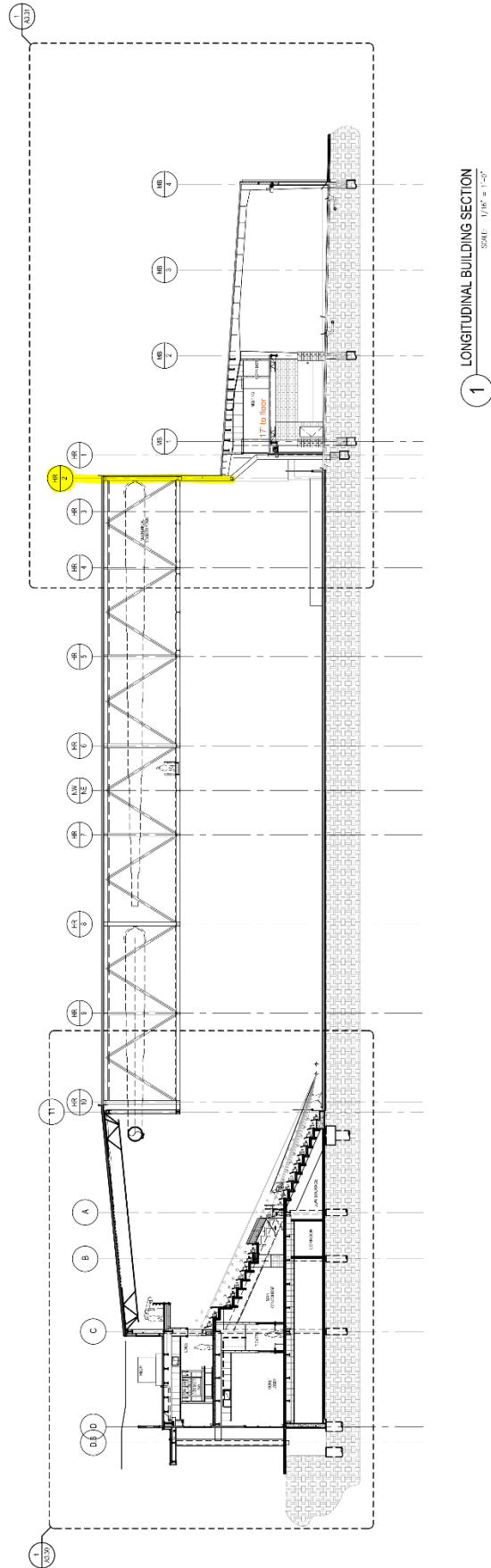
BOTTOM CHORD RIGGING LOAD SCHEDULE			
PLAN SYMBOL	DEAD HUNG TOTAL VERTICAL	BRIDAL TOTAL VERTICAL	BRIDAL TOTAL HORIZONTAL
1	8,000 lbs	4,000 lbs	4,000 lbs
2	16,000 lbs	12,000 lbs	4,000 lbs BETWEEN BEAMS
3	4,000 lbs	0 lbs	0 lbs
4	A) 24,000 lbs MAX BETWEEN TRUSS VERTICALS -SUMMER=NO SNOW B) 20,000 lbs MAX BETWEEN TRUSS VERTICALS -WINTER	12,000 lbs BETWEEN TRUSS VERTICALS	4,000 lbs BETWEEN BEAMS

**FALL PROTECTION NOTES:**  
 1. RIGGING GRID AND TRUSSES ARE CAPABLE OF ACCOMMODATING A LIFE SAFETY FALL PROTECTION SYSTEM ENGINEERED PER OSHA STANDARDS WITHIN THE FOLLOWING GUIDELINES:  
 -RIGGING GRID MEMBERS AND TRUSS CHORD LOAD CAPACITIES ARE LIMITED AS INDICATED IN THE BOTTOM CHORD RIGGING SCHEDULE

# Erie Insurance Arena Cross Section

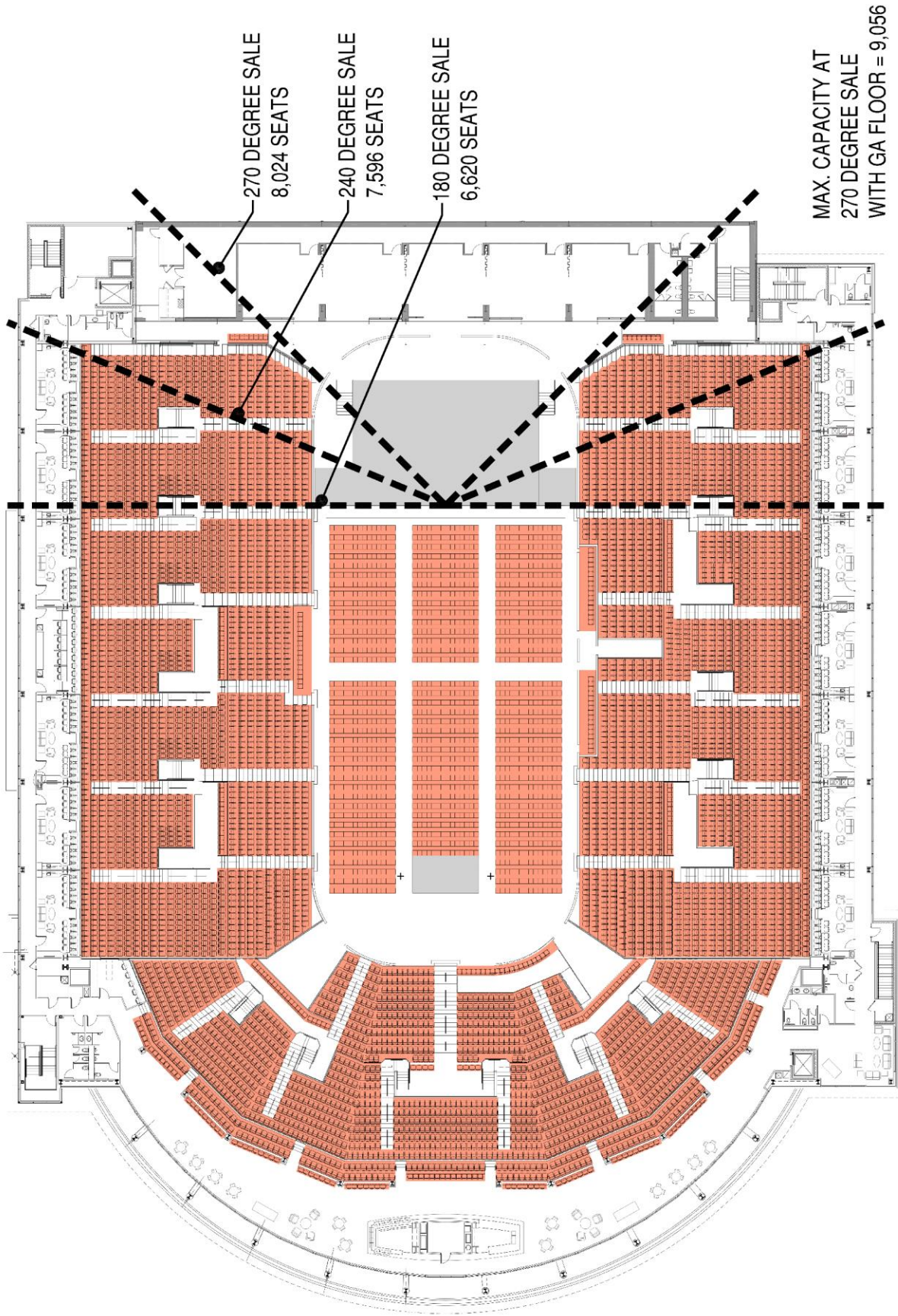


2 TRANSVERSE BUILDING SECTION  
SCALE: 1/16" = 1'-0"



1 LONGITUDINAL BUILDING SECTION  
SCALE: 1/16" = 1'-0"





MAX. CAPACITY AT  
270 DEGREE SALE  
WITH GA FLOOR = 9,056

Erie Insurance Arena





**E R I E** County **C**onvention **C**enter **A**uthority